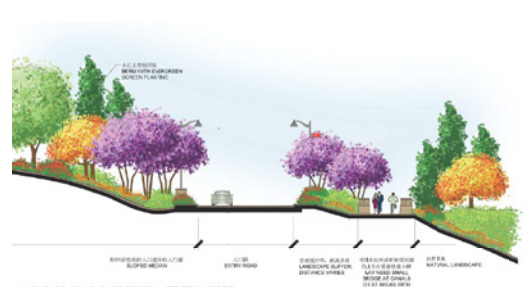


石象湖景观大道 SEL PARKWAY

vanderToolen • Associates



LANDSCAPE ARCHITECTS



INFO

项目 PROJECT

石象湖景观大道

Stone Elephant Lake

Parkway

成都，中国

Chengdu, China

客户 CLIENT

保利实业有限公司

Poly Industrial Co.

SCOPE OF WORK 工作范围

概念设计

Conceptual Design

方案设计

Schematic Design

扩初设计

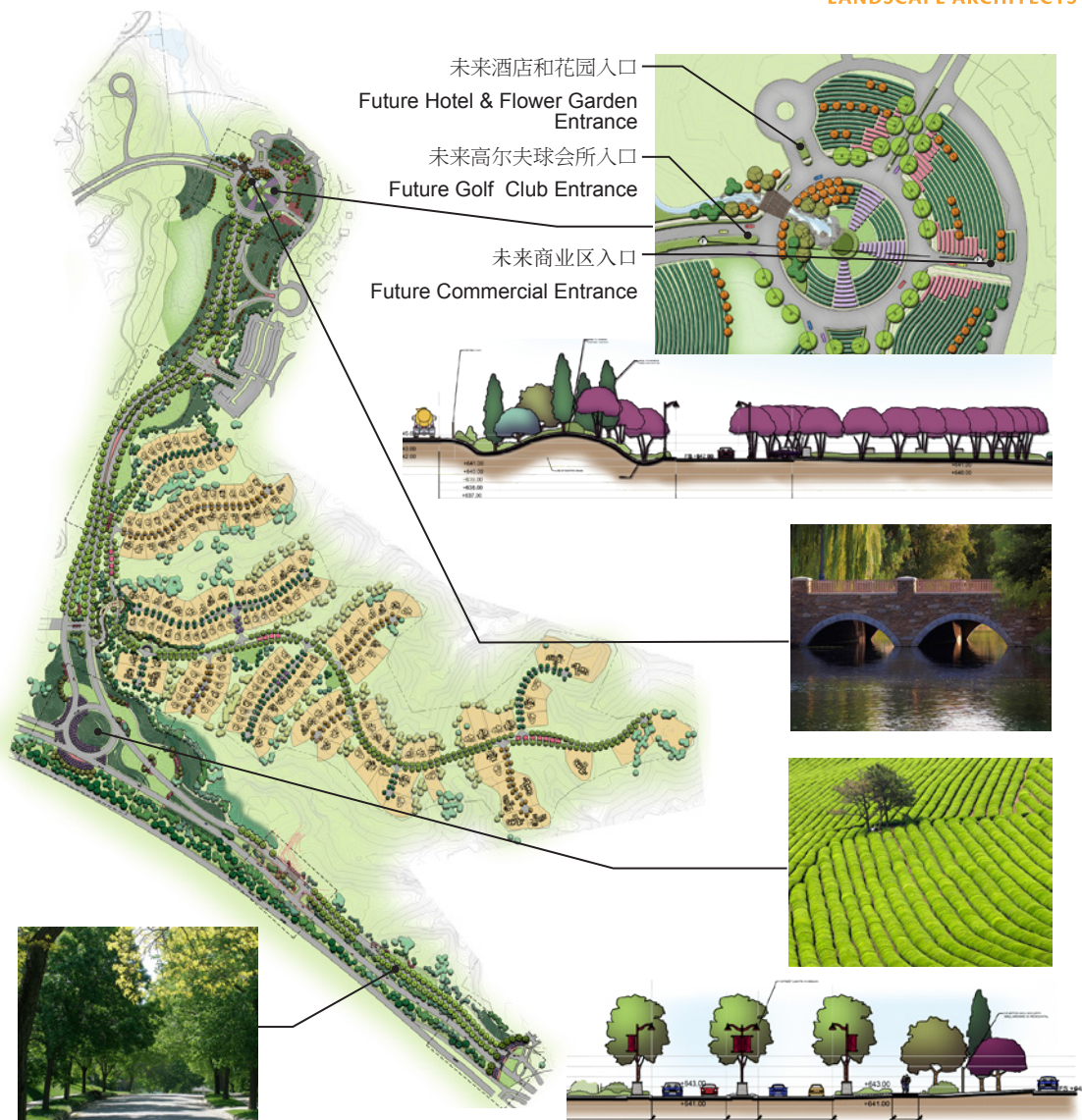
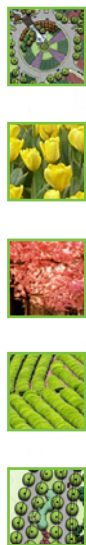
Design Development

DESCRIPTION

石象湖位于中国的四川省，其美丽的花卉花园、连绵起伏的丘陵和现有的湖泊在是众所周知的著名旅游景观。社区景观大道成为了区分繁忙的高速公路的过渡带，让访客充分地体会到进入一个天然公园的氛围，视觉上享受到现有的森林和连绵起伏丘陵。已经栽种着沿着景观大道的开花樱桃树群正在庆祝春天的到来，并突显了花卉花园百花盛开的季节。

Stone Elephant Lake located in the Sichuan Province of China is well known by visitors for the beautiful flower gardens, rolling hills and existing lake. The Community Parkway transitions the visitor from a busy highway to a natural park atmosphere with framed views of existing forest and rolling hills. Masses of flowering cherry trees have been introduced along the Parkway to celebrate spring and highlight the experience of the Flower Garden blooming season.

高尔夫球场社区 GOLF COURSE COMMUNITY



INFO

项目 PROJECT
石象湖, 高尔夫球场社区
Stone Elephant Lake,
Golf Course
Community
成都, 中国
Chengdu, China
客户 CLIENT
保利实业有限公司
Poly Industrial Co.

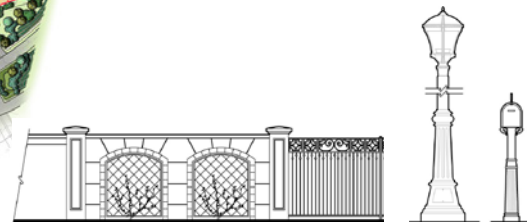
SCOPE OF WORK 工作范围
概念设计
Conceptual Design
方案设计
Schematic Design
扩初设计
Design Development

DESCRIPTION

石象湖坐落于中国的四川省, 它以美丽的花卉园林, 连绵不绝的山丘和清澈见底的湖泊著称, 吸引了无数的各地游客。其第一阶段的工作范围包括设计景色宜人的林荫大道, 豪华的园林别墅, 独门式的社区豪宅和优雅的示范性住宅。

Stone Elephant Lake located in the Sichuan Province of China is well known by visitors for the beautiful flower gardens, rolling hills and existing lake. Phase one scope of work includes a landscaped boulevard, exclusive gated community for luxury homes and elegant model homes.

高尔夫球场社区 GOLF COURSE COMMUNITY



INFO

项目 **PROJECT**
石象湖 C4 住宅用
地平面布置图

Stone Elephant
Lake

C4 Residential
Site Plan

成都，中国

Chengdu, China

客户 **CLIENT**

保利实业有限公司

Poly Industrial Co.

SCOPE OF WORK 工作范围

概念设计

Conceptual Design

方案设计

Schematic Design

扩初设计

Design Development

DESCRIPTION

该住宅范围的主要设计目标是维持该地点的自然地形和现有的树冠形态。其中，层次分明的行道树寓意四平八稳，也给居民带来了当地季节变化的多样感觉。

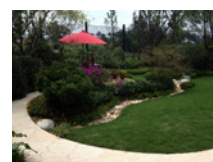
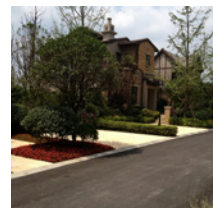
This neighborhood enclave was designed to maintain the sites natural topography and existing tree canopy. A hierarchy of street trees was also used to give the residence a sense of place and seasonal change while layering of plant material anchor the homes to the site and enhance the architecture.

高尔夫球场社区 GOLF COURSE COMMUNITY

vanderToolen • Associates

VTA

LANDSCAPE ARCHITECTS



INFO

项目 PROJECT

石象湖3期别墅
Stone Elephant
Lake

Phase 3

成都，中国

Chengdu, China

客户 CLIENT

保利实业有限公司
Poly Industrial Co.

SCOPE OF WORK 工作范围

概念设计

Conceptual Design

方案设计

Schematic Design

扩初设计

Design Development

DESCRIPTION

该邻里社区正是为保持场地的自然地貌和现有的乔木树冠而设计的。街道树多样的层次结构也被采用于设计当中，植物的层次结构更点缀了住宅，提高了建筑结构的美感和望向高尔夫球场的美丽画框，从而为整个住宅社区带来了理想的居住环境和季节性变化的感觉

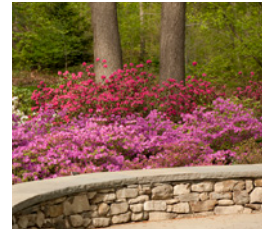
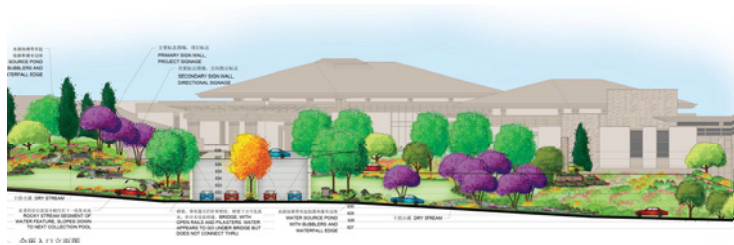
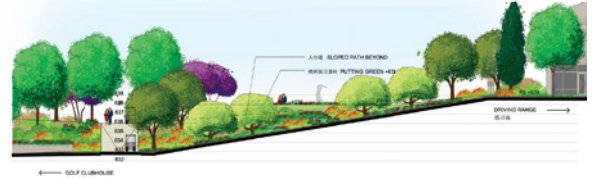
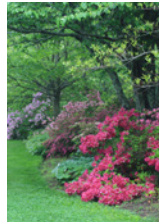
This neighborhood enclave was designed to maintain the sites natural topography and existing tree canopy. A hierarchy of street trees was also used to give the residence a sense of place and seasonal change while layering of plant material anchor the homes to the site, enhance the architecture and frame views to the golf course.

石象湖高尔夫会所 GOLF CLUBHOUSE

vanderToolen • Associates

VTA

LANDSCAPE ARCHITECTS



INFO

项目 PROJECT
石象湖高尔夫会所
Stone Elephant
Lake
Golf Clubhouse
成都, 中国
Chengdu, China
客户 CLIENT
保利实业有限公司
Poly Industrial Co.

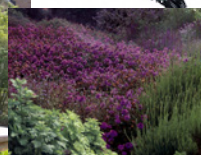
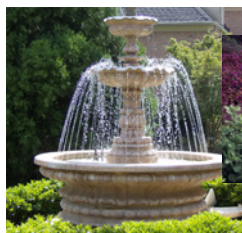
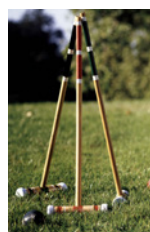
SCOPE OF WORK 工作范围
概念设计
Conceptual Design
方案设计
Schematic Design
扩初设计
Design Development

DESCRIPTION

高尔夫会所入口的设计注入了层叠水景，弯曲的石墙和重点种植的元素，呈现出大气的感觉。竖向设计是非常敏感的，该设计需要维持现有的斜坡，增加了坡台从而屏蔽了停车场，以及低矮石围墙需与坡度相结合，在景观和高尔夫会所之间创造自然的过渡。

The entrance for the Golf Clubhouse with elements of cascading water features, curving stone walls and accent planting were designed to make a grand entrance. The grading design was very sensitive to the site, existing slopes were maintained, berms added to screen the parking lot, and low stone walls were integrated with the grades to create a natural transition between the landscape and Golf Club.

样板别墅 MODELS



INFO

项目 **PROJECT**
石象湖, C4 样板
别墅

Stone Elephant
Lake

C4 Models

成都, 中国

Chengdu, China

客户 **CLIENT**

保利实业有限公司
Poly Industrial Co.

SCOPE OF WORK 工作范围

概念设计

Conceptual Design

方案设计

Schematic Design

扩初设计

Design Development

DESCRIPTION

石象湖的设计不但提升了个人住宅的建筑风格, 而且也强调了周围的自然景观和地形的互相融合。该设计中葱翠的景观包含了喷泉, 水潭, 餐饮台阶和户外壁炉, 这些景观创造了一个另人难忘的经历。

The models at Stone Elephant Lake were designed to enhance the architectural style of the individual homes as well as enhance the surrounding natural landscape and topography. The model's lush landscaping includes elements such as water fountains, pools, dining terraces and fire places that create a memorable experience.

样板别墅 MODELS

vanderToolen • Associates

VTA

LANDSCAPE ARCHITECTS



信息

INFO

项目 PROJECT

Lafitte Manor
Model Home
Landscape
Design

样板房景观设计
成都，中国

Chengdu, China

客户 CLIENT

保利实业有限公司
Poly Industrial Co.

SCOPE OF WORK 工作范围

概念设计

Conceptual Design

扩初设计

Design Development

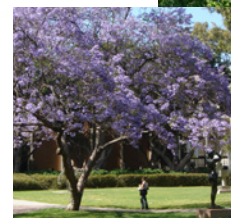
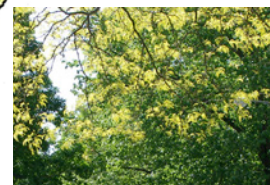
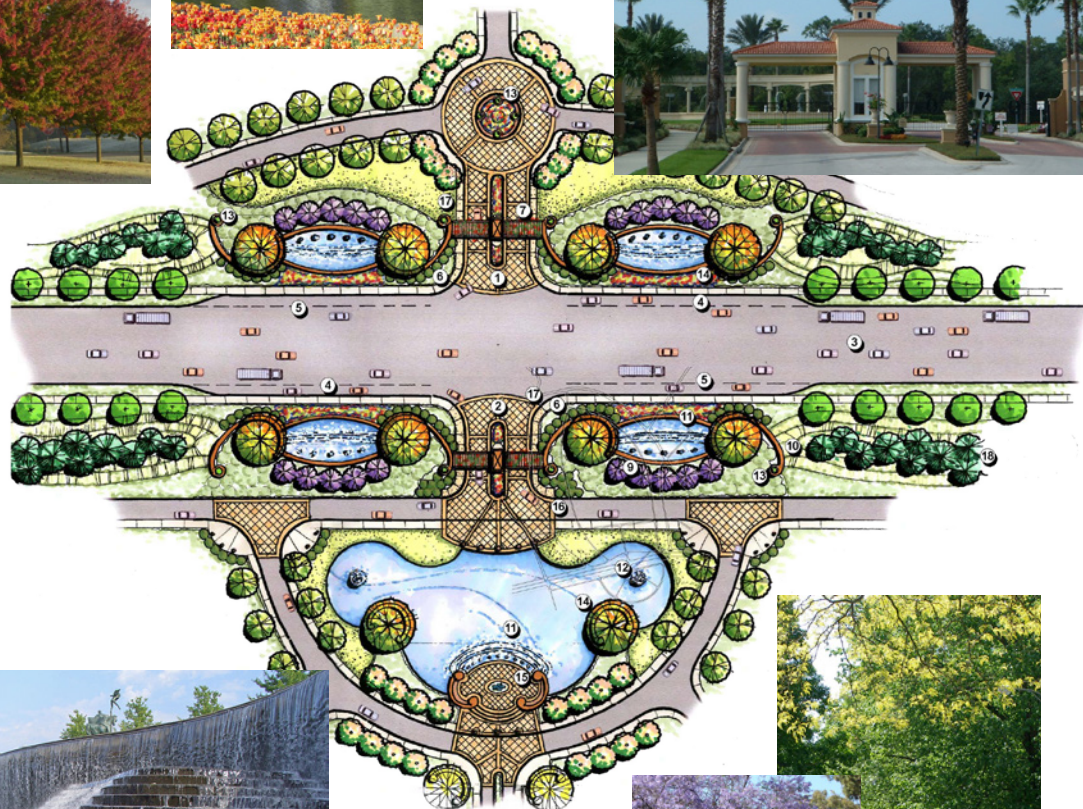
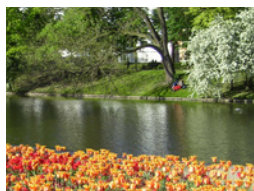
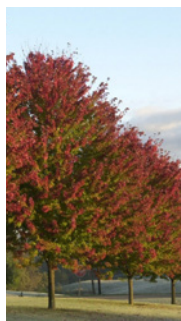
描述

DESCRIPTION

拉菲特庄园是一个高档的高尔夫球场度假社区。它位于繁忙成都的郊外，该开发项目充分利用了绿色乡村的优势，为业主带来了一种与烦扰隔绝，世外桃源的感觉。样板房的设计环绕高档豪华住宅，业主能够充分利用后院的的空间，享受到来自高尔夫球场的开敞式景观。

Lafitte Manor is a Golf Course Community focused on high end residential and resort style living. Located just outside of busy Chengdu the development takes advantage of its green country side and provides its homeowners with a sense of escape. The models were designed around high end luxury living that allows the home owner to take advantage of their backyard space and enjoy the views that open up to the golf course.

商业区 COMMERCIAL



INFO

项目 PROJECT

大东沟项目

Big Donggou Project

中国，大连

Dalian, China

客户 CLIENT

亿达

YiDA

SCOPE OF WORK 工作范围

概念设计

Conceptual Design

DESCRIPTION

vTA设计了科技公园和高尔夫球会所的入口，该设计意着重感官视线和对称性的互相协调。层叠式的水景布置，蜿蜒的石壁砌墙和芬芳扑鼻的植物等设计元素创造了一个具有双-重用途而又富丽堂皇的入口。在高尔夫球会所，华丽而独特的湖泊/水景设计让会员和客人充分体验到会所的盛情接待。

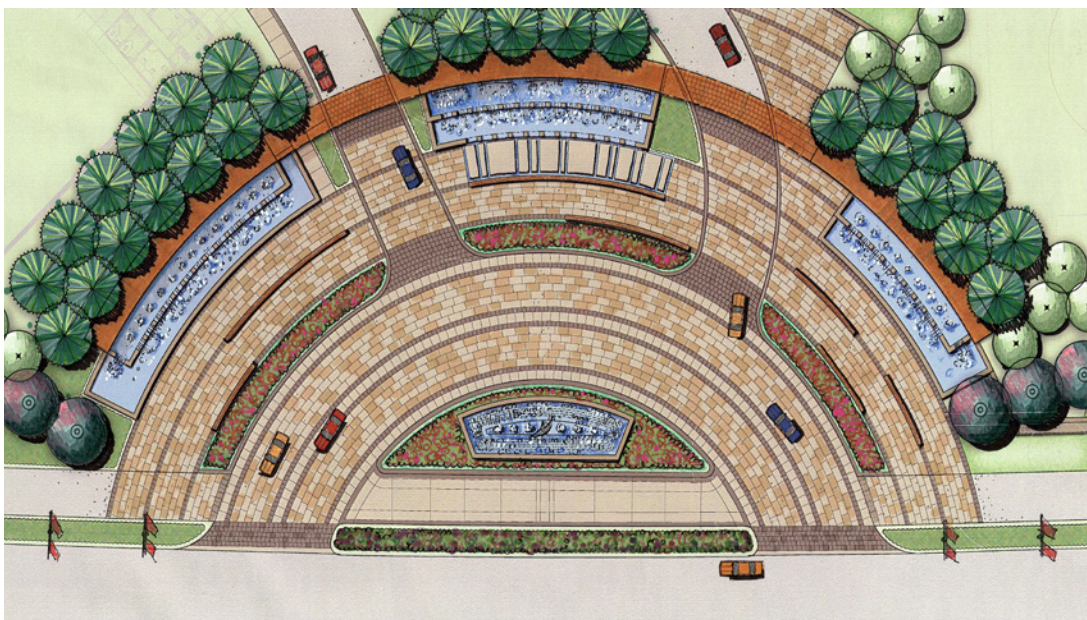
vTA designed the entrance for the Technology Park and the Golf Clubhouse with elements of cascading water features, curving stone walls and accent planting were designed to make a grand entrance for both uses. At the golf clubhouse an additional lake/water feature was designed to enhance the entry experience welcoming members and guests to this exclusive facility.

公园项目入口 PARK ENTRANCE

vanderToolen • Associates

VTA

LANDSCAPE ARCHITECTS



信息

INFO

项目 **PROJECT**
198公园项目入口
中国成都
Park 198 Project
Entrance
Xindu, China

客户 **CLIENT**
保利实业有限公司
Poly Industrial Co.

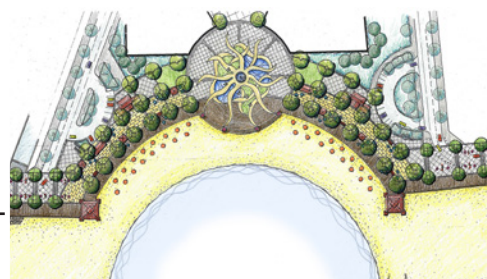
SCOPE OF WORK 工作范围
概念设计
Conceptual Design
扩初设计
Design Development

描述

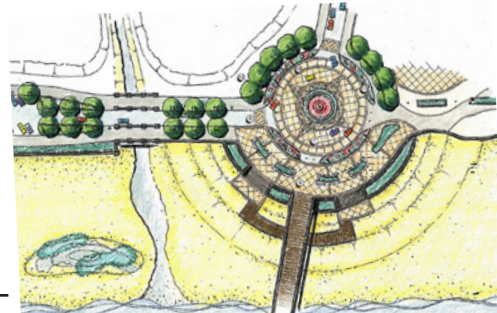
DESCRIPTION

保利198公园的入口设计缔造了一个壮丽的而有特色的大门，瞬间成为了社区内居民和访客公认的地标。“音乐之睛”是沿着林荫大道的景观概念和项目地区的主题构思。入口和音乐主题完全地融入了整遍项目区域，同时突出了和谐的景观特色。
The design for the Poly Park 198 entry was to create a magnificent gateway feature that is recognized as an instantaneous landmark for community residents and visitors. 'Music for the Eyes' is the landscape concept and theme for the project area along the boulevard. The entry and music theme is fully integrated along the entire length of the project area and compliments the harmonious landscape features.

海滩滨水公园 WATERFRONT BEACH PARK



淡水游泳池 Swim Lagoon

海洋水上平台和海滨长廊
Ocean Pier and Beach Promenade海浪广场和海滨长廊
Wave Plaza and Beach Promenade

信息

INFO

项目 PROJECT
滨水公园
中国北戴河
Waterfront Park
Beidaihe, China

客户 CLIENT
北京华贸奥苑房地产开发有限公司
Beijing Olympic Court, Central Place
Real Estate Development Co. Ltd.

SCOPE OF WORK 工作范围
概念设计
Conceptual Design
扩初设计
Design Development

描述

DESCRIPTION

作为一个新总体规划社区的一部分，北戴河滨水公园将成为未来的游艇码头、度假酒店、零售购物中心、高尔夫度假区、住宅社区和会展中心。vTA设计了2.7公里长的海滨公园，包括公园、漫步公园、以及广阔的海滨景观，从而创造了一个能保留和改善海滩的项目。

As part of a new master planned community, The Beidaihe Waterfront Park will serve as the anchor for a future marina, several resort hotels, a retail shopping center, golf resort, residential communities, and convention center. vTA designed 2.7 kilometers of beachfront with parks, boardwalks, and extensive seaside landscaping to create a project that preserves and enhances the beach.